

COLOURWORKS
and Serenity



©
ORIGINALSTYLE



Contents

COLOURWORKS: field tile (152x152x7mm/6"x6"x1/4"), half tile, omega trim and contemporary skirting in 25 gloss colours and 2 colours with a satin finish.

Page 4-13 Colourworks range
Page 26 Colour guide
Page 28 Important information

SERENITY: 30 gloss colours in a field tile (100x100x10mm/4"x4"x3/8") and Elite, a pencil shaped moulding.

Page 14 Serenity range
Page 27 Colour guide
Page 28 Important information

COLOURWORKS *and Serenity*

It's all about colour: when it comes to decorating living spaces, colour is key. It is the most important element in your toolkit - with clever use of colour you can completely change the look and feel of any space.

Next in importance is the type of materials you use and how you combine them together to create the total package for coverings on walls, floors, furniture and windows. Tiles are a clever choice for walls - they've been used for thousands of years and simply don't go out of fashion. They don't have to be restricted to bathrooms and kitchens either, as they work just as well in utility areas, porches, washrooms, hallways, living rooms, in fact, anywhere you need a practical, hygienic, easy to clean, hard-wearing and beautiful wall covering!

Choose from these two contemporary Collections:

- Colourworks, 25 gloss and 2 satin colours in 6"/152mm field tiles, half tiles and mouldings
- Serenity, 30 gloss colours in 4"/100mm field tiles with a pencil moulding

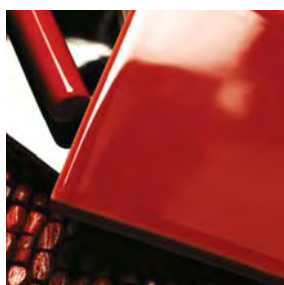
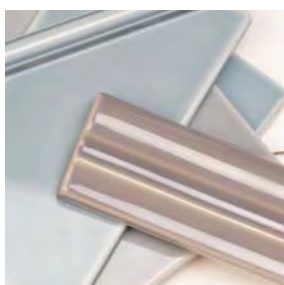
Together they provide a huge choice for creating the effect you are looking for, whether it's a dramatic statement or calming, relaxing environment. Most of the tiles in the two ranges (all except the whites) are made using Variglaze, a special glaze formula which produces a unique colour effect, where you can see subtle variations in tone and depth from tile to tile.

This brochure contains all the colour options available so it can be used like a paint colour swatch book; it also includes some hints and tips, and above all, we hope it provides inspiration for creating the best look for your home.

"Our inspiration for the new colours came from the natural world - the sea, sky, pebbles, trees, and even a piece of driftwood. Then, like nature, we took a little time refining the various shades to get them to work as combinations. The Colourworks and Serenity palettes will complement most interiors from ultra-modern to classic style."

Miles Jennings, Design Director

It's all about colour





Corn, Colonial White

COLOURWORKS (152mm/6")

white to cream

Whites and creams are a practical choice for many locations around a home. Colours ranging from white through to pale blonde shades can instil a calm and harmonious feel to a room, and also work well as a neutral backdrop to showcase accessories in stronger, richer colours.



BRILLIANT WHITE A



COLONIAL WHITE B



COUNTY CREAM GCC



CORN GCO

Brilliant White (A), Colonial White (B), County Cream (GCC), Corn (GCO), Cotton (GCT), Wheat (GWT)

These colours are available in the following tiles and mouldings. Use the suffix code (eg 9000 for field tile) after the colour code (eg GCC9000 for Country Cream field tile) for the full product code.

Type	Code	Dimensions
Field tile	9000	152 x 152 x 7mm (6" x 6" x 1/4")
Half tile	9002	152 x 75 x 7mm (6" x 3" x 1/4")
Omega	9909	152 x 12mm (6" x 1/2")
Contemporary skirting	9933	152 x 108mm (6" x 4 1/4")
Modo capping	9934	152 x 45mm (6" x 1 3/4")



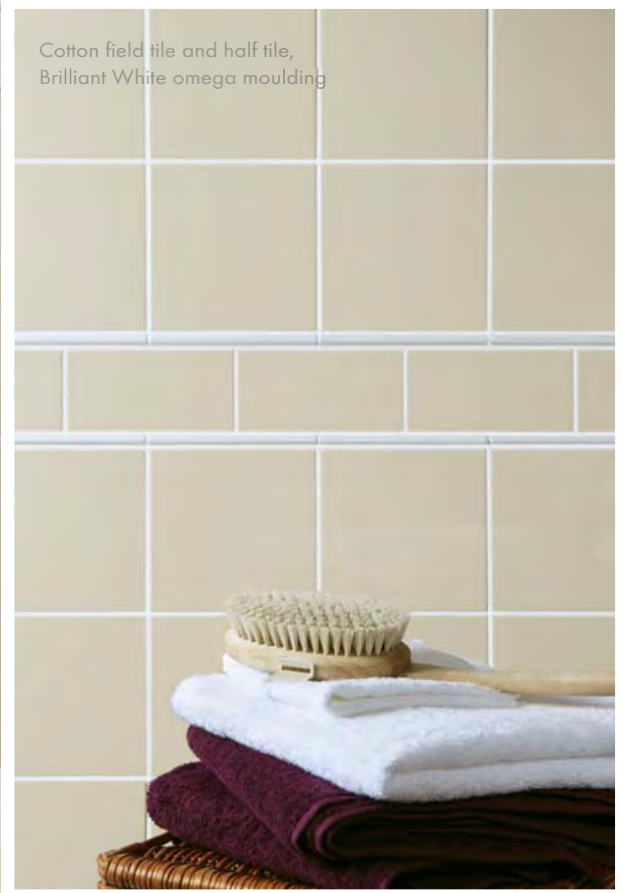
COTTON GCT



WHEAT GWT



Brilliant White field tile and half tile, County Cream field tile, omega moulding and contemporary skirting



Cotton field tile and half tile, Brilliant White omega moulding



Corn field tile and skirting

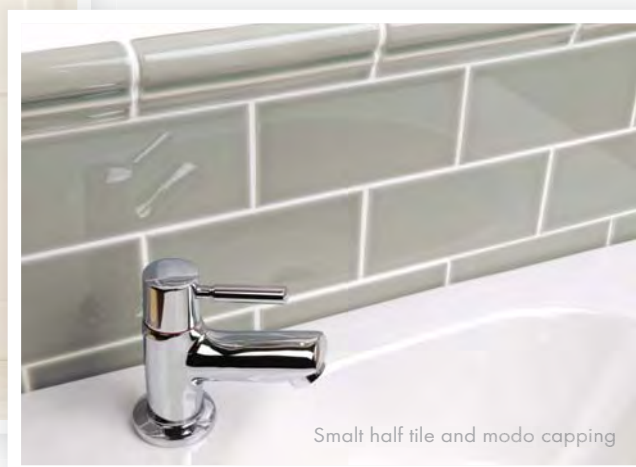
Corniche field tile



Dove half tile, modo capping and contemporary skirting



Small half tile and modo capping





Corniche, Slate, Caspian

COLOURWORKS (152mm/6")

blue to green

Use a light shade of blue in a room and the space miraculously looks bigger. Blue is a calming, cooling colour – but best not used in a north facing room as it may feel a little chilly! A fresh green teamed with white gives a crisp effect; mix soft greens with other greens and blues for a feeling of harmony.



CASPIAN GCA



CORNICHE GCN



DOVE GDO



SMALT GSM

Caspian (GCA), Corniche (GCN), Dove (GDO), Smalt (GSM)

These colours are available in the following tiles and mouldings. Use the suffix code (eg 9000 for field tile) after the colour code (eg GDO9000 for Dove field tile) for the full product code.

Type	Code	Dimensions
Field tile	9000	152 x 152 x 7mm (6" x 6" x 1/4")
Half tile	9002	152 x 75 x 7mm (6" x 3" x 1/4")
Omega	9909	152 x 12mm (6" x 1/2")
Contemporary skirting	9933	152 x 108mm (6" x 4 1/4")
Modo capping	9934	152 x 45mm (6" x 1 3/4")

Tip: When you are looking for inspiration, whether it's for redecorating a room or redesigning an entire house, put together a mood board (see inside front cover). Tear out photos from magazines, collect fabric and wallpaper swatches, ribbons, gather leaves, pebbles, feathers, paint colour cards, make brush strokes of paint on pieces of card and sketch your ideas – in fact anything that appeals! Place items together on a board or in a box to see how they look.



Camargue, Palladian Beige, Eau-de-nil

COLOURWORKS (152mm/6")

green to brown

The nature-inspired greens and beigey-brown on this page work well in kitchens and dining areas. Soft muted tones combine beautifully with the many shades of brown found in natural wood, such as flooring, worktops and furniture. They can be further enhanced by accent colours of pale coral and terracotta.



EAU-DE-NIL GED



CAMARGUE GCM



VERDIGRIS GVE



SAVANNAH GSV

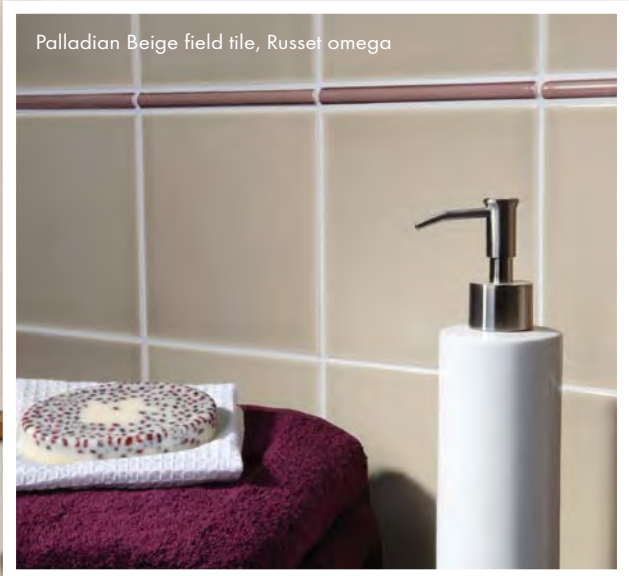
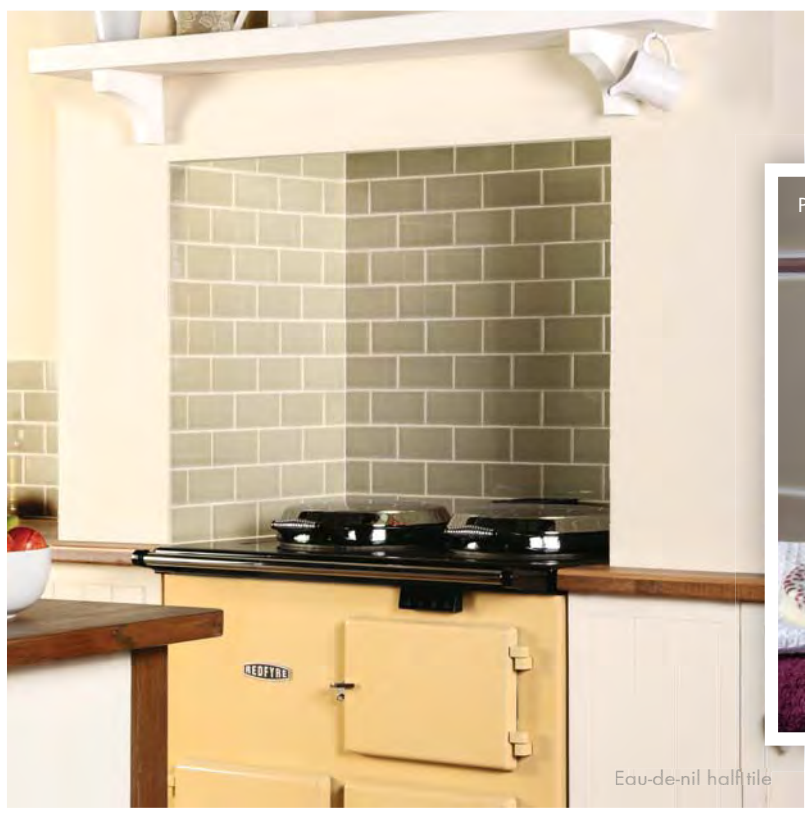


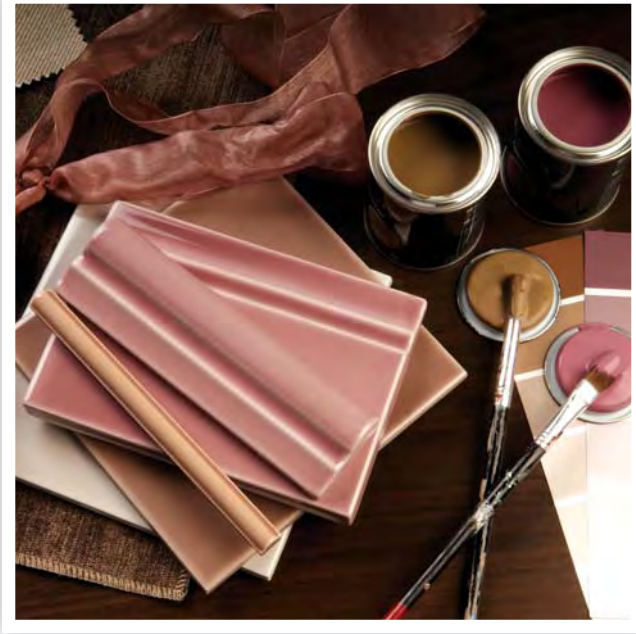
PALLADIAN BEIGE GPB

Eau-de-Nil (GED), Camargue (GCM), Verdigris (GVE), Savannah (GSV), Palladian Beige (GPB)

These colours are available in the following tiles and mouldings. Use the suffix code (eg 9000 for field tile) after the colour code (eg GED9000 for Eau-de-Nil field tile) for the full product code.

Type	Code	Dimensions
Field tile	9000	152 x 152 x 7mm (6" x 6" x 1/4")
Half tile	9002	152 x 75 x 7mm (6" x 3" x 1/4")
Omega	9909	152 x 12mm (6" x 1/2")
Contemporary skirting	9933	152 x 108mm (6" x 4 1/4")
Modo capping	9934	152 x 45mm (6" x 1 3/4")





Beech, Russet, Birch

Tiling Tip

Combine contrasting half tiles with full size tiles over large areas and enjoy the subtle effects of the Variglaze. Make full use of the mouldings available in this range, too: the skirting tile gives a neat finishing border between wall and floor; Omega is a versatile pencil strip and the Modo moulding provides an authoritative edge over a run of tiles, or acts as a border between two different colours.

COLOURWORKS (152mm/6")

brown to red

Earthy reds and warm browns look hot together and equally good teamed with other warm colours like creams, yellows, and cooler whites and greys. Designers often use brown as an anchor to stabilise or pull together a collection of disparate colours.



BIRCH GBI



BEECH GBE



UMBER GMB



STONE GST



SIENNA GSE



RUSSET GRU

Birch (GBI), Beech (GBE), Umber (GMB), Stone (GST), Sienna (GSE), Russet (GRU)

These colours are available in the following tiles and mouldings. Use the suffix code (eg 9000 for field tile) after the colour code (eg GMB9000 for Umber field tile) for the full product code.

Type	Code	Dimensions
Field tile	9000	152 x 152 x 7mm (6" x 6" x 1/4")
Half tile	9002	152 x 75 x 7mm (6" x 3" x 1/4")
Omega	9909	152 x 12mm (6" x 1/2")
Contemporary skirting	9933	152 x 108mm (6" x 4 1/4")
Modo capping	9934	152 x 45mm (6" x 1 3/4")

Birch half tile, Stone field tile



Russet half tile, modo capping, contemporary skirting



Stone field tile

COLOURWORKS (152mm/6")

grey to lilac



SLATE GSL



WOAD GWO



PLUM GPL



NIGELLA GNG



Slate (GSL), Woad (GWO), Plum (GPL), Nigella (GNG)

These colours are available in the following tiles and mouldings. Use the suffix code (eg 9000 for field tile) after the colour code (eg GPL9000 for Plum field tile) for the full product code.

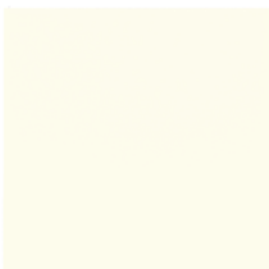
Type	Code	Dimensions
Field tile	9000	152 x 152 x 7mm (6" x 6" x 1/4")
Half tile	9002	152 x 75 x 7mm (6" x 3" x 1/4")
Omega	9909	152 x 12mm (6" x 1/2")
Contemporary skirting	9933	152 x 108mm (6" x 4 1/4")
Modo capping	9934	152 x 45mm (6" x 1 3/4")



Daisy Satin field tile

COLOURWORKS (152mm/6")

satin finish



DAISY CDA



LILY CLY

Most of our Colourworks tiles are beautifully glossy, but for those occasions and locations where you are looking for a softer finish, Daisy and Lily will fit the bill perfectly.

Daisy (CDA), Lily (CLY)

These colours are available in the following tiles and mouldings. Use the suffix code (eg 9000 for field tile) after the colour code (eg CLY9000 for Lily field tile) for the full product code.

Type	Code	Dimensions
Field tile	9000	152 x 152 x 7mm (6" x 6" x ¼")
Half tile	9002	152 x 75 x 7mm (6" x 3" x ¼")
Omega	9909	152 x 12mm (6" x ½")
Contemporary skirting	9933	152 x 108mm (6" x 4¼")
Modo capping	9934	152 x 45mm (6" x 1¾")



Red Passion field tile



Milo field tile, Red Passion Elite moulding



Quatro field tile



Mila, Red Passion, Quatro

Serenity (100mm/4")

BLACK, RED, BROWN

Vibrant red is associated with killer lipstick, danger, sports cars, and a dozen roses on St Valentine's Day. Wherever you tile with Serenity's Red Passion, it will raise the pulse and provoke a reaction! Make a statement with the other strong and powerful colours in this range too, such as Quatro.



MILA GW-CML



RED PASSION GW-CRP



QUATRO GW-CQT



AKIDO GW-CAK

**Mila (GW-CML), Red Passion (GW-CRP),
Quatro (GW-CQT), Akido (GW-CAK)**

These colours are available in the following formats. Use the code (eg 0404 for field tile) after the colour code (eg GW-CRP0404 for Red Passion field tile) for the full product code.

Type	Code	Dimensions
Field tile	0404	100 x 100 x 10mm (4" x 4" x 3/8")
Elite moulding	8910	100 x 14mm (4" x 9/16")

Tiling Tip

When red is used to decorate a room it has the opposite effect to blue, as it can make walls appear closer – which is fine if the effect you desire is to add drama, minimise a space or make the room feel intimate or cosy. Red is extensively used in restaurants, bars and pubs, as it is thought to increase the appetite! So it is perfect for dining areas and kitchens, and works well with modern surfaces.



Laya, Siri, Agora

Serenity (100mm/4")

BROWN, RED, PINK

Red and browns in this palette can either look rustic and organic or chic and sophisticated: it really depends on what other materials you put next to them. For example, materials such as wood, wool, terracotta and unpolished stone will create a timeless natural style, whilst stainless steel, glass and other glossy surfaces will lend a modern edge.



MONDRE* GW-CMN



AGORA GW-CAG



CONTI GW-CCN



STRADA GW-CST



SIRI GW-CSR



ARAS GW-CAA

Mondre (GW-CMN), Agora (GW-CAG), Conti (GW-CCN), Strada (GW-CST), Siri (GW-CSR), Aras (GW-CAA)

These colours are available in the following formats. Use the suffix code (eg 0404 for field tile) after the colour code (eg GW-CSR0404 for Siri field tile) for the full product code.

Type	Code	Dimensions
Field tile	0404	100 x 100 x 10mm (4" x 4" x 3/8")
Elite moulding	8910	100 x 14mm (4" x 9/16")

* May be subject to crazing



Aras field tile

Tiling Tip

Seal your lovely white grout immediately after completing the tiling and before using in the bathroom, kitchen or utility area. Use Seal Guard (www.seal-guard.eu/uk) and the grout will stay clean and bright and won't need any abrasive or harsh cleaners. To keep tiles fresh, regularly wash with clean water and a soft cloth such as an e-cloth, or use a pH neutral cleaning product. Dry off and polish with a dry duster or e-cloth for a perfect finish.



Siri field tile



Opus, Gamma, Laya and Osmore field tiles



Scala field tile



Serenity (100mm/4")

Opus, Osmor, Scala

NEUTRALS

The neutral palette can be the decorator's best friend. With neutral combinations you can create a layered look that's elegant and calm, which can be easily spiced up with a pinch of strong accent colour if you want to add interest or change the feel. The trick is to use temporary items that can be changed often and easily: a bowl of oranges, a jug of bright flowers; towels; kitchen accessories.



OPUS GW-COP



SCALA GW-CSC



GAMMA GW-CGA



LAYA GW-CLA



OSMOR GW-COS

Opus (GW-COP), Scala (GW-CSC), Gamma (GW-CGA), Laya (GW-CLA), Osmor (GW-COS)

These colours are available in the following formats. Use the suffix code (eg 0404 for field tile) after the colour code (eg GW-COP0404 for Opus field tile) for the full product code.

Type	Code	Dimensions
Field tile	0404	100 x 100 x 10mm (4" x 4" x 3/8")
Elite moulding	8910	100 x 14mm (4" x 9/16")



Modo, Zen, Misaki

Tiling Tip

Serenity tiles also match 100mm/4" glass tiles from our Glassworks range, not only in size but shades that complement too. For more information about Glassworks and other Original Style ranges, visit www.originalstyle.com

Serenity (100mm/4")

WHITE, MAUVE, LILAC

White reflects the light, so any light on the glossy white Zen will bounce around a room. Soften any tendency towards looking too clinical by adding luxurious towels and chic accessories. Mauves and lilacs can be both warm and cool, as they take on characteristics of colours nearby and appear to change under different lights.



ZEN GW-CZE



MODO GW-CMD



MISAKI GW-CMS



QUIN GW-CQN

**Zen (GW-CZE), Modo (GW-CMD), Misaki (GW-CMS),
Quin (GW-CQN)**

These colours are available in the following formats. Use the suffix code (eg 0404 for field tile) after the colour code (eg GW-CZE0404 for Zen field tile) for the full product code.

Type	Code	Dimensions
Field tile	0404	100 x 100 x 10mm (4" x 4" x 3/8")
Elite moulding	8910	100 x 14mm (4" x 9/16")

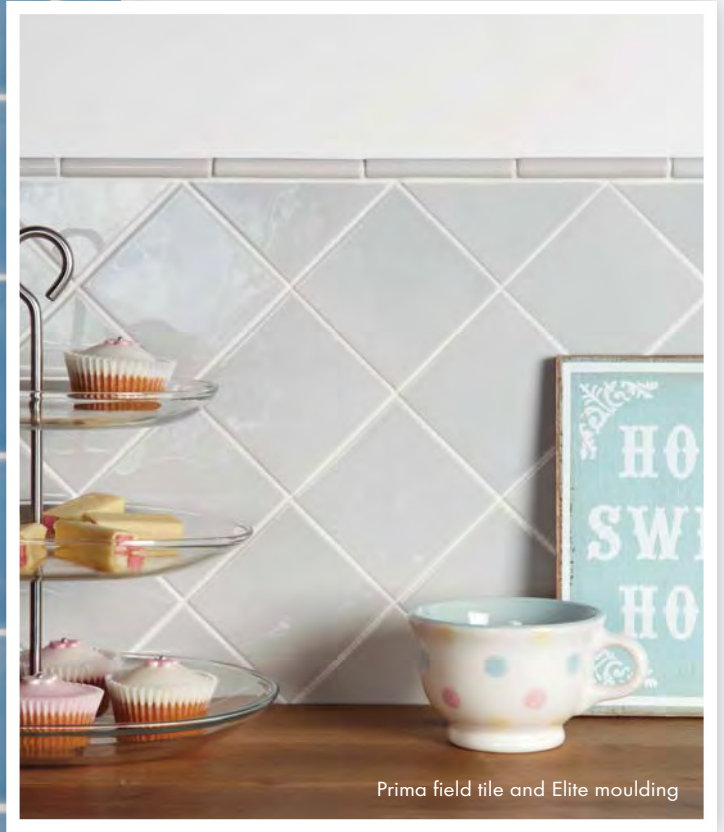


Zen field tile with Original Style Mixed Mosaics
Andaman GW- ANDMOS



Misaki and Modo field tiles

Bono field tile



Prima field tile and Elite moulding

Zafi field tile





Bono, Odyssey, Panache

Did you know?

Blue is probably the world's favourite colour – this has been borne out many times in research.

Serenity (100mm/4")

BLUE, GREY

Fresh blue and white is a time-honoured pairing; think traditional striped Cornish Ware or Delft pottery and delicate Willow Pattern china. However that doesn't mean to say that blue and white can't be snappily modern as well.



BONO GW-CBN



ODYSSEY GW-COD

Bono (GW-CBN), Odyssey (GW-COD), Prima (GW-CPR), Panache (GW-CPN), Zafi (GW-CZF)

These colours are available in the following formats. Use the suffix code (eg 0404 for field tile) after the colour code (eg GW-CPR0404 for Prima field tile) for the full product code.

Type	Code	Dimensions
Field tile	0404	100 x 100 x 10mm (4" x 4" x 3/8")
Elite moulding	8910	100 x 14mm (4" x 9/16")



PRIMA GW-CPR



PANACHE GW-CPN



ZAFI GW-CZF



Aquarius, Spa, Mirage

Serenity (100mm/4")

GREEN

Whatever the shade, green is the colour that links the inside to the great outdoors. Pale shades can instil a feeling of harmony, whilst brighter, refreshing greens can stimulate the mood. Swap traditional blues and whites for green to make a bathroom zing.



ZONE GW-CZN



MIRAGE GW-CMA



AQUARIUS GW-CAQ



GEMINI GW-CGE



SPA GW-CSP

Zone (GW-CZN), Mirage (GW-CMA), Aquarius (GW-CAQ), Gemini (GW-CGE), Spa (GW-CSP)

These colours are available in the following formats. Use the suffix code (eg 0404 for field tile) after the colour code (eg GW-CZN0404 for Zone field tile) for the full product code.

Type	Code	Dimensions
Field tile	0404	100 x 100 x 10mm (4" x 4" x 3/8")
Elite moulding	8910	100 x 14mm (4" x 9/16")



Mirage field tile, Agora Elite moulding

Tiling Tip

When choosing the colours and materials for your room, experiment before you start. Get samples of your paint, tiles, fabrics and other materials and place them in the room in different lights and locations, even different times of day, to make sure you are happy with the scheme. Some colours and materials look very different in daylight/artificial lighting; the way a room faces can also affect colour, for example north facing rooms benefit from the use of warm tones rather than blues and greys. Remember that gloss tiles will reflect light and some colour back into the space, unlike less dense materials.

Zone field tile, with Original Style
Glassworks tile 100 x 100mm Mississippi



COLOURWORKS

Guide to the full range – Field tile, half tile and mouldings, which add a finishing touch to your design, are available in these gloss and satin colours.



FIELD TILE CODE 9000
152 x 152 x 7mm (6" x 6" x 1/4")



HALF TILE CODE 9002
152 x 75 x 7mm (6" x 3" x 1/4")



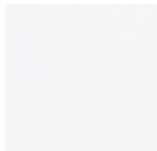
CONTEMPORARY SKIRTING CODE 9933
152 x 108 x xxmm (6" x 4 1/4")



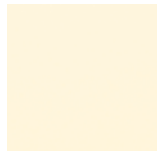
MODO CAPPING CODE 9934
152 x 45mm (6" x 1 3/4")



OMEGA CODE 9909
152 x 12mm (6" x 1/2")



BRILLIANT WHITE
A



COLONIAL WHITE
B



COUNTY CREAM
GCC



CORN
GCO



COTTON
GCT



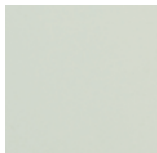
WHEAT
GWH



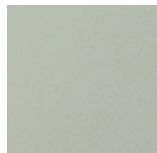
CASPIAN
GCA



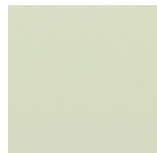
CORNICHE
GCN



DOVE
GDO



SMALT
GSM



EAU-DE-NIL
GED



CAMARGUE
GCM



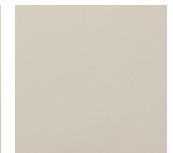
VERDIGRIS
GVE



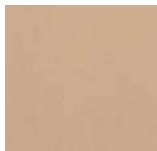
SAVANNAH
GSV



PALLADIAN BEIGE
GPB



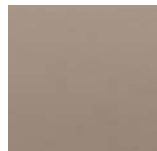
BIRCH
GBI



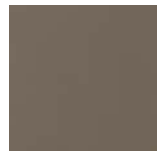
BEECH
GBE



UMBER
GMB



STONE
GST



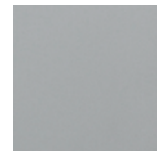
SIENNA
GSE



RUSSET
GRU



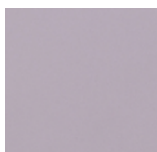
SLATE
GSL



WOAD
GWO



PLUM
GPL



NIGELLA
GNG



DAISY (Satin)
CDA



LILY (Satin)
CLY

Serenity

Guide to the full range – Field tile and the Elite moulding, which adds a finishing touch to your design, are available in these gloss colours. Serenity tiles are also a perfect match to the 100mm/4" glass tiles from our Glassworks range, not only in size but in shades that complement too. For more information about Glassworks and other Original Style ranges, visit www.originalstyle.com



FIELD TILE CODE 0404
100 x 100 x 10mm (4" x 4" x 3/8")



ELITE MOULDING CODE 8910
100 x 14mm (4" x 9/16")

ZEN GW-CZE	OPUS GW-COP	GAMMA GW-CGA	ASPIRE GW-CAP	SCALA GW-CSC	PRIMA GW-CPR	ZONE GW-CZN	ZAFI GW-CCZF
MIRAGE GW-CMA	AQUARIUS GW-CAQ	GEMINI GW-CGE	SPA GW-CSP	LAYA GW-CLA	AGORA GW-CAG	CONTI GW-CCN	OSMOR GW-COS
PANACHE GW-CPN	MODO GW-CMD	MISAKI GW-CMS	QUIN GW-CQN	BONO GW-CBN	ODYSSEY GW-COD	ARAS GW-CAA	SIRI GW-CSR
STRADA GW-CST	RED PASSION GW-CRP	AKIDO GW-CAK	QUATRO GW-CQT	MONDRE* GW-CMN	MILA GW-CML		

* May be subject to crazing

IMPORTANT INFORMATION



ENGLISH

Shade Variation

Shade variation is an inherent feature of the manufacturing process of Colourworks and Serenity tiles. Please note that all the tiles in these ranges (except the whites) are produced using Variglaze, a special glaze formula which produces a unique colour effect. This distinctive yet subtle variation in colour is particularly enhanced in the gloss tiles. We recommend that tiles are loosely laid out and 'blended' prior to fixing to achieve the most pleasing distribution of shades. Differences between batches can be more marked, so for this reason we recommend that you buy all the tiles at one time. No liability for shading issues can be accepted after installation.

The surfaces and edges of Serenity tiles can undulate slightly, which may also result in natural shading and fractional differences in stated dimensions, see below.

Nominal Dimensions

Throughout this brochure we quote nominal dimensions which are subject to slight variation within internationally accepted standards. Please note that as the mouldings are slip-cast not dust-pressed, the dimensions may vary.

Scratching

As with all glazed surfaces, some wearing or scratching may occur over a period of time. Care should therefore be taken to select the proper tile for a given use.

Crazing

Highly glazed ceramic tiles may craze with time, and no guarantee can be given against this occurrence.

Suitability

Colourworks and Serenity tiles are suitable for walls only, including walls in wet rooms and showers. They are not suitable for work surfaces, floors or external use.

How many tiles will you need?

Nominal Tile Size*	per square metre	per square foot
Colourworks Field tile 152 x 152mm (6" x 6") Half tile 152 x 75mm (6" x 3")	43 86	4 8
Serenity Field tile 100 x 100mm (4" x 4")	100	9
Nominal Tile Moulding Length*	per linear metre	Tiles per linear foot
Colourworks Omega, Modo Capping, Skirting 152mm (6")	6.6	2
Serenity Elite 100mm (4")	10	3

Based on a 2mm grout gap. All dimensions are subject to a tolerance of +2.5mm or 3/32". Please allow five per cent extra for wastage.

Installation, Adhesives and Grouts

Always use high quality adhesives and grouts following manufacturers' recommendations for their use and suitability for the type of tile, the application and the substrate being tiled. In all installations, seal joints with an impervious grout. If joints are not completely watertight, moisture can be absorbed into the tile body causing stains to show through the glaze. Use an average grout space of at least 2mm to allow for variations in tile dimensions. When installing in power showers, Epoxy grout must be used.

The Original Style Tile Fixing Guide can be downloaded from www.originalstyle.com/fixing.html

In the USA please follow the recommendations of a reputable adhesive manufacturer and always comply with American National Standards Institute (ANSI) specifications as set out in the Handbook for Ceramic Tile Installation published by the Tile Council of America. Useful links: www.ctoa.org www.tileusa.com

Photography

Owing to variations in studio lighting and printing inks, the tile colours shown in this brochure may differ slightly from those of the actual tiles. It is always advisable to ask your Original Style supplier to show you a sample.

Limits of Liability

Original Style accepts no liability for the faulty installation of its products. In the case of any claim relating to the tiles themselves, Original Style's liability, to the extent permitted by law, is limited to either the replacement of the product or a refund of the cost of the product, and does not extend to cover any consequential loss. Claims must be reported within seven working days from receipt of the tiles. Tiles must be inspected prior to installation and claims cannot be considered after the tiles have been installed.

Please be advised that installation constitutes acceptance of the quality, colour, texture and shade of the tiles. Original Style warrants that its tiles conform to their description and are fit for their purpose. Original Style makes no other express or implied warranty as to fitness or suitability of the products for particular installations. We extend no guarantees, express or implied, as to wear resistance or maintenance procedures.

Please note the use of certain acid based cleaning products may cause some of the tiles to react and change in character.

Acknowledgements

We are very grateful to the following companies for their assistance with the photographic settings:

1st Choice Kitchens - 01392 210598
 Debenhams - www.debenhams.co.uk
 Fagins Antiques - www.faginsantiques.com
 Furniture Village - www.furniturevillage.co.uk
 Habitat - www.habitat.co.uk
 Ivybridge Antique Baths - www.antiquebaths.com
 Jane Strickland and Daughters - www.janestrickland.co.uk
 McBains Antiques - www.antiques.co.uk
 Orange Tree Interiors - www.theorangetree.co.uk
 Otto Retro - www.ottoretro.co.uk
 Redfyre - www.redfyrecookers.co.uk
 Reflections - 01392 204529
 UKBW - www.ukbw.com

INFORMATIONS ESSENTIELLES

FRENCH

Variation de teinte

La variation de teinte est une caractéristique inhérente au processus de fabrication des carreaux Colourworks et Serenity. Veuillez noter que, dans ces deux gammes, tous les carreaux (sauf les carreaux blancs) sont fabriqués en utilisant Variglaze, une formule de émail spécial qui produit un effet coloré unique. Cette variation de couleur, à la fois caractéristique et subtile, ressort plus particulièrement sur les carreaux au fini lustré. Nous vous recommandons d'étaler les carreaux et de les agencer avant de les fixer, afin de répartir les différentes teintes de la manière la plus harmonieuse. Les différences sont plus marquées d'un lot à l'autre, ainsi nous vous recommandons d'acheter tous les carreaux en une seule fois. Nous n'accepterons aucune responsabilité pour les litiges relatifs à la variation de teinte une fois les carreaux installés.

La surface et les côtés des carreaux Serenity peuvent présenter de légères ondulations, ce qui pourra aussi créer des teintes naturelles et provoquer des différences minimes par rapport aux dimensions indiquées ci-dessous.

Dimensions nominales

Tout au long de cette brochure, nous indiquons les dimensions nominales, qui peuvent être sujettes à de légères variations, mais toujours dans la limite des normes internationales en vigueur. Veuillez noter que, comme les carreaux sont coulés en barbotine et non pressés à sec, les dimensions pourront présenter des variations.

Rayures

Comme pour toutes les surfaces vitrifiées, les carreaux peuvent devenir usés ou rayés avec le temps. Soyez donc vigilants de choisir les carreaux qui correspondent le mieux à l'usage que vous en ferez.

Craquelures

Les carreaux en céramique fortement vitrifiés peuvent se craqueler au fil du temps. Nous ne pouvons offrir aucune garantie contre cette éventualité.

Usage

Les carreaux Colourworks et Serenity conviennent uniquement pour une pose murale, y compris dans les salles de bains et les douches. Ils ne peuvent pas être installés sur les plan de travail, les sols ou l'usage extérieur.

De combien de carreaux aurez-vous besoin ?

Taille nominale du carreau*	par mètre carré
Colourworks Field tile 152 x 152mm (6" x 6") Half tile 152 x 75mm (6" x 3")	43 86
Serenity Field tile 100 x 100mm (4" x 4")	100
Longueur nominale des moulures des carreaux*	par mètre linéaire
Colourworks Omega, Modo Capping, Skirting 152mm (6")	6,6
Serenity Elite 100mm (4")	10

* Ces estimations prennent en compte un écart de joint de 2mm. Les dimensions sont sujettes à une tolérance de +2,5mm. Prévoyez 5 % supplémentaires pour compte des pertes.

Installation, colles et joints

Veillez à toujours utiliser une colle et un ciment-joint de haute qualité et suivre les recommandations du fabricant concernant leur utilisation, le type de carreaux auquel ils sont adaptés, leur application et le subjectile sur lequel les carreaux seront installés. Pour toute installation, assurez-vous de poser des joints étanches. Si les joints ne sont pas complètement résistants à l'eau, les carreaux risqueront d'absorber l'humidité, ce qui fera apparaître des taches à travers d'email. Veillez à ce que l'écart de joint soit de 2mm en moyenne, au cas où la dimension des carreaux présente de légères variations. Si les carreaux sont installés dans une douche multi-jets, vous devez utiliser un joint Epoxy.

Le Guide de fixation des carreaux d'Original Style peut être téléchargé sur www.originalstyle.com/fixing.html

Si vous vous trouvez aux Etats-Unis, veuillez suivre les recommandations d'un fabricant de colles réputé et conformez-vous toujours aux spécifications de l'American National Standards Institute (ANSI), décrites dans le Manuel pour l'installation de carreaux en céramique (Handbook for Ceramic Tile Installation) publié par le Tile Council of America. Liens utiles : www.ctoa.org www.tileusa.com

Photographies

L'éclairage en studio et les encres utilisées pour l'impression peuvent affecter la couleur des carreaux présentés dans ce catalogue. Avant de passer commande, il est toujours préférable de vous procurer des échantillons auprès d'un revendeur Original Style.

Limitation de responsabilité

Original Style refuse toute responsabilité en cas d'installation incorrecte de ses produits. En cas de réclamation relative aux carreaux eux-mêmes, la responsabilité d'Original Style sera confinée, dans la limite autorisée par la loi, au remplacement du produit ou au remboursement du prix du produit, et ne couvre pas les dommages indirects. Toute réclamation doit être effectuée dans les 14 jours suivant réception des carreaux. Les carreaux doivent être inspectés avant installation. Aucune réclamation ne sera prise en compte une fois les carreaux installés.

Notez que l'installation du carrelage constitue l'acceptation de la qualité, de la couleur, de la texture et de la teinte des carreaux. Original Style garantit que ses carreaux sont conformes au descriptif fourni et qu'ils sont adaptés à l'usage pour lequel ils sont prévus. Original Style ne formule aucune garantie expresse ou implicite supplémentaire vis-à-vis de l'adéquation ou de la compatibilité de ses produits dans des installations spécifiques. Nous ne formulons aucune garantie, expresse ou implicite, vis-à-vis de la résistance à l'usure ou des procédures d'entretien.

Veillez noter que l'utilisation de certains produits nettoyants à base d'acide peut provoquer des réactions sur certains carreaux et en modifier les caractéristiques.

WICHTIGE INFORMATIONEN



GERMAN

Farbvariationen

Farbvariationen sind ein charakteristisches Merkmal des Herstellungsprozesses für Colourworks und Serenity Fliesen. Beachten Sie bitte, dass alle Fliesen in diesen Sortimenten (ausgenommen weiße Fliesen) mit „Variglaze“ produziert werden, einer speziellen Glasurformel, die einen einzigartigen Farbeffekt erzeugt. Diese dezente, dennoch unverkennbare Farbvariation ist besonders bei Glanzfliesen auffällig. Wir empfehlen die Fliesen vor dem Fixieren zunächst lose zu verlegen und zu „vermischen“, um die attraktivste Anordnung der Farbnuancen auszuprobieren. Unterschiede zwischen einzelnen Chargen können sogar noch deutlicher ausfallen. Aus diesem Grund empfehlen wir dringend, dass Sie alle Fliesen auf einmal kaufen. Wir können keine Haftung für eventuelle Farbprobleme nach der Installation übernehmen.

Oberfläche und Kanten der Serenity Fliesen können leicht wellenförmig verlaufen, was auch leichten Unterschieden in der natürlichen Schattierung und der Nennmaße führen kann (siehe unten).

Nennmaße

In dieser Broschüre geben wir Sollmaße an, die leichten Abweichungen innerhalb international anerkannter Normen unterliegen. Da unsere Formen per Schlickerguss und nicht durch Trockenpressen hergestellt werden, können die Maße leicht variieren.

Kratzer

Wie bei allen glasierten Oberflächen können mit der Zeit Anzeichen von Abnutzung und leichte Kratzer auftreten. Daher ist es wichtig von vornherein die richtige Fliese für den jeweiligen Einsatz zu wählen.

Glasurrisse

Stark glasierte Keramikfliesen können mit der Zeit Glasurrisse bekommen und wir können in dieser Hinsicht keine Gewähr übernehmen.

Eignung

Colourworks und Serenity Fliesen sind nur für Wände geeignet, einschließlich Wände in Nasszellen und Duschen. Sie eignen sich nicht für Arbeitsflächen, Böden oder Außenanwendungen.

Wie viele Fliesen brauchen Sie?

Genormte Fliesengröße	pro Quadratmeter
Colourworks Field tile 152 x 152 mm (6" x 6") Half tile 152 x 75 mm (6" x 3")	43 86
Serenity Field tile 100 x 100 mm (4" x 4")	100
Genormte Länge der Bordüre	pro lfd. Meter
Colourworks Omega, Modo Capping, Skirting 152 mm (6")	6,6
Serenity Elite 100 mm (4")	10

* Basierend auf 2 mm Fuge. Alle Abmessungen unterliegen einer Toleranz von $\pm 2,5$ mm. Bitte planen Sie zusätzliche fünf Prozent für Ausschuss ein.

Installation, Kleber und Fugenmasse

Verwenden Sie immer hochwertige Kleber und Fugenmasse. Befolgen Sie die Anweisung des Herstellers bezüglich Verwendung und Eignung für bestimmte Fliesenarten, Einsatzbereich und Untergrund. Bei jeder Installation sind die Fugen mit einer wasserdichten Fugenmasse abzudichten. Wenn die Fugen nicht vollständig wasserdicht sind, kann Feuchtigkeit in die Fliesen eindringen und Verfärbungen der Glasierung verursachen. Die Fugenbreite muss mindestens 2 mm betragen, um Unterschiede in den Fliesenabmessungen ausgleichen zu können. Bei der Installation einer „Power Shower“ muss unbedingt Epoxidfugenmasse verwendet werden.

Die Original Style Anleitung zur Flieseninstallation kann von www.originalstyle.com/fixing.html heruntergeladen werden.

Wenn Sie in den USA wohnen, dann befolgen Sie die Anweisungen eines renommierten Kleberherstellers und beachten Sie dabei immer die Spezifikationen des amerikanischen staatlichen Normenverbands (ANSI), wie sie im Handbuch für die Installation von Keramikfliesen vorgeschrieben sind, das vom Tile Council of America herausgegeben wurde. Nützliche Webseiten sind: www.ctioa.org, www.tileuse.com

Fotographie

Aufgrund variierender Beleuchtungsverhältnisse im Studio oder bei Druckfarben können die in der Broschüre zu sehenden Farben geringfügig von der tatsächlichen Farbgebung abweichen. Bevor Sie Ihre Auswahl treffen, sollten Sie immer zuvor einen Einzelhändler für Original Style nach Mustern fragen.

Haftungsbeschränkung

Original Style übernimmt für die fehlerhafte Installation seiner Fliesen keine Haftung. Sollte es Reklamationen bezüglich der Fliesen selbst geben, dann beschränkt sich die gesetzlich eingeräumte Haftung von Original Style lediglich auf den Artikelaustausch oder Kostenrückerstattung. Folgeschäden werden nicht abgedeckt. Reklamationen sind innerhalb von 14 Werktagen nach Annahme der Fliesen geltend zu machen. Vor der Verlegung sind die Fliesen zu prüfen. Reklamationen nach der Verlegung der Fliesen können nicht berücksichtigt werden.

Bitte beachten Sie, dass Sie durch die Installation hinsichtlich Qualität, Farbgebung, Textur oder Schattierung keine Beanstandungen anzeigen. Original Style gewährleistet die Beschreibungs- und zweckgemäße Fabrikationsausführung der Fliesen. Original Style gibt keine weiteren ausdrücklichen oder impliziten Garantien hinsichtlich Eignung der Artikel für besondere Installationsarten. Wir geben weder ausdrücklich noch implizit eine Garantieverlängerung auf Abnutzungsverhalten oder Wartungsarbeiten.

Beachten Sie bitte, dass die Fliesen bei Verwendung von säurebasierten Reinigungsmitteln reagieren und ihr Aussehen verändern können.

BELANGRIJKE INFORMATIE

DUTCH

Schaduweffect

De tegelseries 'Colourworks' en 'Serenity' bevatten kleurnuances die karakteristiek zijn en onderdeel van het productieproces van de tegels.

Behalve de witte tegels, zijn alle tegels in beide series met het speciale 'Variglaze' bedekt. Deze speciale glazuur coating zorgt voor het unieke kleureffect. De subtiele kleurnuances zijn dan ook specifieke kenmerken van deze glanzende tegels. Voordat u gaat tegelzetten bevelen wij u aan om alle bestelde tegels eerst te mixen, waardoor er prachtige kleurschakeringen ontstaan.

Wij raden u aan alle benodigde tegels in 1 keer te bestellen, omdat er verschillen kunnen zijn tussen de serie tegels onderling. Als de tegels eenmaal zijn gezet, kunnen wij niet aansprakelijk worden gehouden voor mogelijke ontevredenheid over de nuanceverschillen.

Het oppervlak en de hoeken van de 'Serenity' tegels hebben een iets golvende eigenschap. De tegel heeft hierdoor een natuurlijk schaduw effect en is een fractie ongelijk van formaat (zie onder).

Gemiddelde afmetingen

In deze brochure wordt gesproken over gemiddelde afmetingen die licht kunnen afwijken van elkaar, maar die onverminderd vallen onder de toegestane internationale standaard metingen. De moulding strips daarentegen kunnen kwa maatvoering nogal verschillen wanneer ze slip-gegoten zijn in plaats van stofgeperst.

Scheuren

Zoals bij alle geglazuurde tegels kan door veelvuldig gebruik in de loop der tijd scheurtjes ontstaan. Bedenk goed voor welk oppervlak u de tegel wilt gebruiken, zodat u de juiste tegel kiest.

Toepassing

Tegels uit de serie 'Colourworks' en 'Serenity' zijn uitsluitend geschikt voor muren, inclusief natte ruimten. Deze tegels zijn niet geschikt voor binnen en buitenvloeren.

Hoeveel tegels heeft u nodig?

Gemiddeld tegelformaat	Per vierkante meter
Colourworks Uni tegel 152 x 152mm (6" x 6") Halve tegel 152 x 75mm (6" x 3")	43 86
Serenity Uni tegel 100 x 100mm (4" x 4")	100
Gemiddelde lengte van tegelrand	Per vierkante meter
Colourworks Omega, Modo Capping, Skirting 152mm (6")	6.6
Serenity Elite 100mm (4")	10

Nb: Gebaseerd op een tegelafstand van 2mm; De tegels mogen een maatafwijking hebben van maximaal 2,5mm; Houdt u rekening met 5% snij verlies.

Behandeling, lijm en specie

Maak bij het tegelzetten altijd gebruik van hoge kwaliteit lijm en specie, conform de gebruikershandleiding en die speciaal geschikt zijn voor dit type tegel en de behandeling voor betreffende ondergrond. Plaats en verbindt elke tegel met ondoordringbare specie. Als de specie niet volledig waterdicht is, kan vocht de tegelkast binnendringen dat vlekken veroorzaakt die door het glazuur heen te zien zijn. Laat minimaal 2mm ruimte tussen de tegels vanwege het verschillende formaat van de tegels. Voor een power-douche dient een Epoxy specie te worden gebruikt.

De Original Style tegelzet gebruikershandleiding kunt u downloaden via: www.originalstyle.com/fixing.html.

Foto's in de brochure

Kleuren in de brochure kunnen licht afwijken van de daadwerkelijke tegels. Het gebruik van kunstlicht, lichtinval, papiersoort en inkt, kunnen hier redenen van zijn. Vraag uw Original Style dealer om een voorbeeldtegel als u twijfelt over de kleur.

Aansprakelijkheid

Original Style is niet aansprakelijk voor verkeerde installatie van de tegels. In het geval van levering van een ondeugdelijk product beperkt de wettelijke aansprakelijkheid van Original Style zich slechts tot vervanging van het product of het retourneren van de kosten van de tegels en niet tot andere gederfde kosten. Klachten moeten binnen 14 werkdagen na ontvangst van de tegels worden ingediend. De eventuele vergoeding van tegels vindt plaats aan de hand van controle van de tegels voorafgaand aan de plaatsing. Wanneer de tegels geplaatst zijn, is Original Style hier niet meer voor verantwoordelijk. Houdt u er rekening mee dat wij slechts instaan voor de kwaliteit, kleurnuance, textuur en tint van de tegels.

Original Style garandeert dat haar tegels volgens de beschrijving worden geproduceerd en geschikt zijn voor het doel waarvoor ze zijn bedoeld.

Original Style attendeert u erop dat de tegels uitsluitend conform bovenvermelde restricties gebruikt moeten worden en dat zij niet verantwoordelijkheid is voor het resultaat van het tegelzetten.

Wij geven geen garanties op verkeerd uitgevoerd onderhoud met bijvoorbeeld een zuurhoudend schoonmaakproduct waardoor slijtage en/of kleurverschil kan optreden.

We wijzen u erop dat het gebruik van bepaalde schoonmaakmiddelen met een hoge zuurgraad kan leiden tot een ongewenste reactie en hiermee het oorspronkelijke aanzien van de tegels.



UK Sales: 01392 473000
 Export Sales: +44 (0)1392 473001
 Other Depts: +44 (0)1392 474011
 Fax: +44 (0)1392 473003
 Email: info@originalstyle.com
 Website: www.originalstyle.com

The 'Original Style' logo is a registered trade mark of Original Style Ltd.

Original Style Limited is registered in England number 3018117. Registered Office: Falcon Road, Sowton Industrial Estate, Exeter, Devon, England EX2 7LF



Your Original Style stockist	£2.00 €3.00 \$3.50
CWORKS2/09/09	

Please return this brochure to your Original Style stockist after use